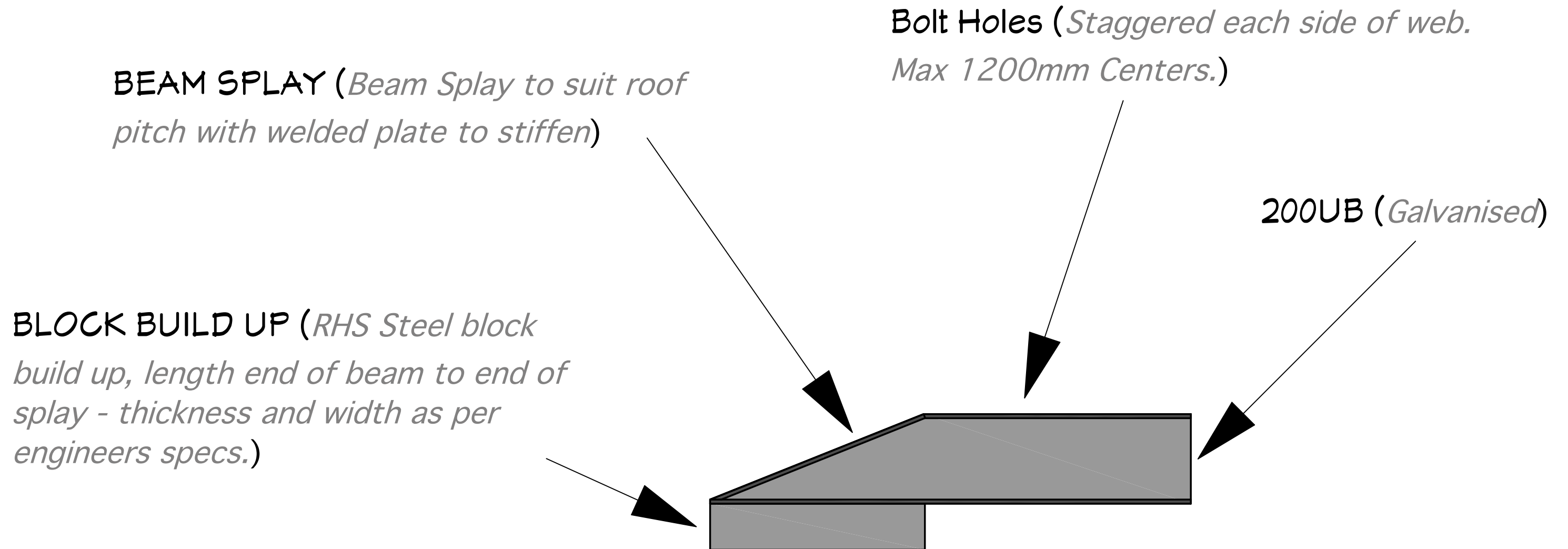




**BEST PRACTICE GUIDE – (STRUCTURAL STEEL)**

**JUNE 7<sup>TH</sup> 2019**



## Apollo Improvements Best Practice Structural Steel Beams

*(Strutting - Counter Beams/Beams running Perpendicular to ceiling Joists)*

**BEAM SPLAY** (*Beam Splay to suit roof pitch with welded plate to stiffen. Minimum 90mm upstand where build up block not required.*)

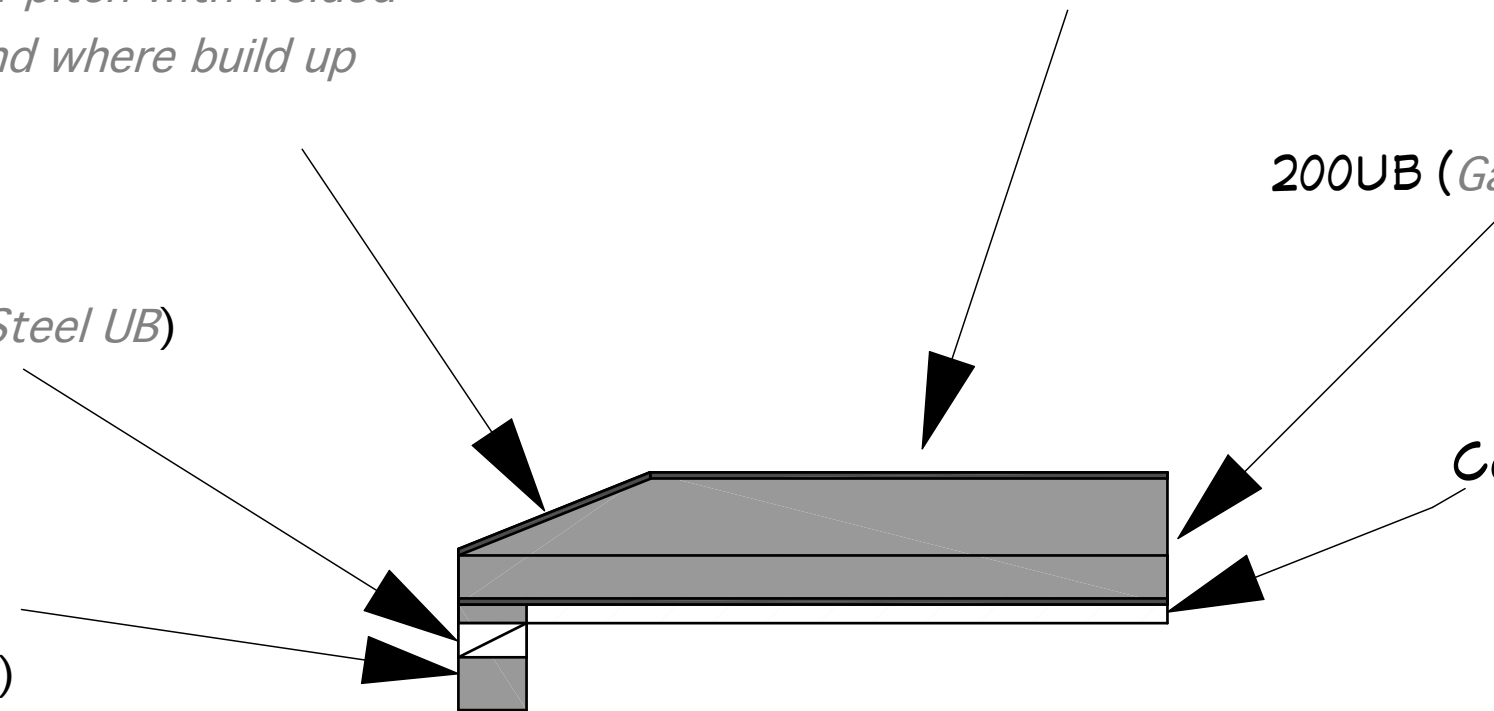
**Top Plate** (*25mm Below underside of Steel UB*)

**STEEL POST** (*RHS Steel Post. Top of post 25mm Higher than ceiling joist underside, to allow for deflection of UB*)

**Bolt Holes** (*Staggered each side of web. Max 1200mm Centers.*)

**200UB (Galvanised)**

**Ceiling Joist**



## Apollo Improvements Best Practice Structural Steel Beams - TIMBER FRAME

*(Strutting Beam - Running parallel with ceiling joists)*

**BEAM SPLAY** (*Beam Splay to suit roof pitch with welded plate to stiffen. Minimum 90mm upstand where build up block not required.*)

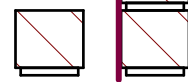
**Bolt Holes** (*Staggered each side of web. Max 1200mm Centers.*)

**200UB** (*Raised 90mm opposing end of beam on a structural packer to provide 25mm mid span ceiling clearance*)

**Top Plate**

**TIE DOWN ROD** (*Welded to end of steel beam as per eng. specs. Chemically anchored into footing where possible. Alternatively chased and attached in wall as per engineers specs*)

**Ceiling Joist**



## Apollo Improvements Best Practice Structural Steel Beams - MASONRY

*(Strutting Beam - Running parallel with ceiling joists)*

The material **may not** be reproduced or **distributed**, in whole or in part, **without** the prior written **permission** of the Apollo Homes & Development Pty Ltd. Any other reproduction or **distribution**, in whatever form and by whatever media, is expressly prohibited **without** the prior written **consent** of the Apollo Homes & Development Pty Ltd.